

# NEWSLETTER

January 2010

## President's message



Tēnā koutou, Members and Friends,

Well, it's a while since I waved my medal at you all (so here's a reminder in the photo). I chose not to wear it at the Wine Tasting (dunking it in wine was a risk) or at the Oktoberfest (not really a medal kind of event) and sadly I missed the Winter Drinks, despite having lined up the stallholders, as an unexpected opportunity to do my sailing Day Skipper certification in Thailand tempted me away.

However I'm delighted to say that the Presidential medal will be dusted off and out again for the Waitangi church service & reception, the Waitangi Day dinner, and again in March at the Air New Zealand New Zealander of the Year award. Details of all of these upcoming events are in this newsletter and also on our website. I'd like to thank NZ Society member (and independent web developer, should you need web services) Mike Kemp for volunteering his time to help us get an online booking system up and running for these & future events, so now you can book and pay online. In the new year we'll look at other site enhancements such as an online membership application.

Looking ahead, we'll be planning next year's events early in the new year, but have pencilled in Penthouse bookings (dates are on the website), and some of the events will be on Friday nights in 2010. If you'd like to be more involved, and maybe help us run an event, do get in touch with one of the committee.

One of the best reasons to support the New Zealand Society, by attending events, helping out, and buying raffle tickets, is being able to help make a difference to causes that otherwise could struggle to find funding opportunities. Our [charitable donations page](#) on our website lists recipients of funds that we've raised from raffles. Our most recent grant is to the Christchurch family of Ollie Van Lent, who will be stopping in London over New Year on their way to Austria for medical treatment. Born with an extremely rare chromosome disorder (one of only 12 in the world), the Austrian clinic will wean Ollie off his feeding tube, so that Raewyn, Hayden & Ollie can enjoy a better quality of life. This treatment isn't available in New Zealand, and the Van Lents have had to fund the journey and treatment themselves, meaning the sale of their house and much fundraising, with one of their air tickets kindly provided by Air New Zealand. The committee all agreed that the New Zealand Society charity fund could fund their London accommodation as a sign of warm hospitality from UK Kiwis. Karyn and I will visit them while they are in London to give the grant to them in person. More details about Ollie are on his website: <http://www.caringbridge.org/visit/Oliverkoby>. It does seem very appropriate at Christmas for us to be assisting a baby and his parents with accommodation in their time of great need.

Lastly, at the end of the New Zealand Society's 82<sup>nd</sup> year, I'd like to thank the hard working committee members, generous sponsors, members and friends who have pitched in during the year, to help make our events & fundraising such a success. We are a voluntary society, run by our members for the benefit of both event attendees and charitable recipients; without everyone's involvement, enthusiasm and general Kiwi "can do" attitude, we simply couldn't continue to operate.

All the best for the remainder of the holiday season, and see you in 2010,  
**Romy Brandeis**  
President

### WHAT'S ON:

Bookings [www.nzociety.co.uk](http://www.nzociety.co.uk)

#### **Thursday 4 February** **Waitangi Church Service & Reception**

St Lawrence Jewry, Next-Guildhall, City of London, Gresham St, London, EC2V 5AA  
6:30pm service, followed by reception hosted by the Worshipful Company of Girdlers.  
Free entry for church service.

£8 to all reception attendees (must be booked in advance) thanks to the generosity of the Girdlers. All ticket proceeds to charity.

#### **Saturday 6 February** **Waitangi Dinner**

Penthouse, NZ House, 80 Haymarket, SW1Y 4TQ, 7:30-11.30pm

Celebrate New Zealand day with the New Zealand Society! A format change for 2010 sees a smaller, less formal dinner, with the New Zealander of the Year to be awarded separately in March.

Includes pre-dinner drink, 3 course gourmet meal, wine through dinner and live music after dinner. Charity raffle. Cash bar after dinner selling NZ beer, wine & L&P at our usual cheap prices. Members: £65 Non members: £75

#### **Wednesday 24 March**

**Air New Zealand New Zealander of the Year award reception** Penthouse, NZ House, 80 Haymarket, London SW1Y 4TQ 6:30pm

Join us in the Penthouse of NZ House for a sparkling Pelorus reception, to find out who has won the NZer of the Year award for 2010, sponsored by Air New Zealand. Included - Pelorus (or NZ beer) and delicious New Zealand themed canapés by previous NZer of the Year winners, Suze of Mayfair. Charity raffle. Cash bar after the awards. Tickets £30. Please nominate NOW using the form in this newsletter!

## Upcoming New Zealand Society events

Thursday 4<sup>th</sup> February 2010

**Waitangi Church Service & Girdlers' reception**, St Lawrence Jewry, Next-Guildhall, Gresham Street, London EC2V 5AA, Church service free entry, reception following service £8.00

Those who have attended this service in past years have always found it a touching experience. NZ Society honorary Chaplain Barry Olsen, who speaks fluent Maori, designs and conducts the service (in full cooperation with the St Lawrence Jewry chaplain) with a decided kiwi flavour. After the service there will be a reception hosted by the Worshipful Company of Girdlers at the Girdlers' Hall, continuing our long association with both St Lawrence Jewry and the Girdlers.

Free entry for church service. £8 charge to all reception attendees thanks to the generosity of the Girdlers who so graciously host us at their Hall. All proceeds to charity. Tickets for the reception must be booked in advance, as space is limited by fire regulations. Book tickets from our website, or write to us as soon as possible enclosing a cheque and list of attendee names.

Saturday 6<sup>th</sup> February 2010

**Waitangi Dinner**, Penthouse, NZ House, 80 Haymarket, London SW1Y 4TQ, 7.30pm – 11.30pm

Celebrate New Zealand day with the New Zealand Society in the Penthouse of New Zealand House! Numbers limited to 80. Includes:

- pre-dinner welcome drink of Morton Estate bubbly (or beer)
- fabulous New Zealand themed seated 3 course meal provided by the excellent Modern Pantry
- NZ wine or beer (or L&P) with dinner. Cash bar opens after dinner.
- Live Kiwi music by Matt Mitchinson after dinner.

Members: £65 Non members: £75. Online booking and payment – please see our website and follow the links.

Menu

Starter

Baked bee pollen crusted ricotta, endive, sorrel and lucques olive salad, Manuka honey dressing

Main course

Roast lamb chump marinated in preserved lemon, cumin and yoghurt, sweet potato and fenugreek mash, cavolo nero, tahini cream

Vegetarian main course

*(must be nominated at booking, can not be changed once booked)*

Roast chestnut, spiced Manouri (cheese) and sweet potato briq, cavolo nero, pickled shimeji & green peppercorns, tomato & lemongrass dressing

Dessert

Hokey pokey ice cream, poached tamarillo, shortbread

Please note that once booked, there are no refunds possible, however you may advise us of a name change (but we can not change your choice of lamb or vegetarian once booked) up to 3 days before the event. We need to provide NZ House with a list of attendees in advance which is why name changes at the last minute are difficult. *Online booking is the ONLY way to book tickets for the dinner - check whether your guests prefer lamb or vegetarian as the online booking system requests this as part of the booking.*

Wednesday 24<sup>th</sup> March 2010

**Air New Zealand NZer of the Year Award Reception**, Penthouse, NZ House, 80 Haymarket, London SW1Y 4TQ, from 6:30pm, Gourmet canapés and vintage Pelorus. Charity raffle.

Join us to be the first to know who is the Air New Zealand NZer of the Year 2010. See nomination form in this newsletter and nominate a deserving person who has raised the profile of New Zealand while here in the UK. As you know, the New Zealand Society's motto is 'celebrating New Zealand in England', and so we are very proud to host this award each year – your nominations help to make it a highly sought after award!

Air New Zealand will present the award at this reception, which will feature gourmet Kiwi canpaes by Suze of Mayfair, vintage Pelorus (or NZ beer) and showcase great New Zealand talent. Cash bar after award ceremony.

This event is now booking from our website, and tickets are £30, for both members and non-members.

## Past New Zealand Society events

Thursday 17 September 2009

### *Wine Tasting*

Carolyn Bosworth-Davies joined us again this year to provide an educational tasting of New Zealand wine. The theme was “New Zealand Wine – Beyond Sauvignon Blanc”, and Carolyn discussed 9 different wines which also did not include any Pinot Noir – fast becoming another New Zealand favourite. The wines were :

- Morton Estate - Chard/PN/PM blend, sparkling
- Mud House Riesling Waipara
- Te Mara Pinot Gris, Central Otago
- Milton Vineyards Chenin Blanc, Gisborne
- Yealands Viognier, Marlborough
- Te Mata Estate Gamay Hawkes Bay
- Trinity Hill Syrah, Gimblett Gravels, Hawkes Bay
- Ata Rangī Celebre ( Bordeaux blend) Martinborough
- Vin Alto Ritorno, Clevedon, Auckland



Janiene Bayliss, of Te Mara, was on hand to tell us more about her vineyard and the Pinot Gris – she had brought along some bottles of the new vintage so we had the unique advantage of a vertical tasting of the two vintages side by side.

Our thanks too, to long time Society supporter Mud House Wines, who not only provided the Riesling for the tasting, but also 5 bottles of their Merlot for our charity raffle. Vin Alto, recently featured at a wine dinner at Suze, also chipped in by selling us the Ritorno at cost.

Although the event did not sell out, it proved popular with attendees and we will hold another wine tasting in 2010.

Thursday 15 October 2009

### *Kiwi Oktoberfest*

After the success of last year’s Kiwi Oktoberfest, once again the Penthouse was filled with thirsty Kiwis and their friends sampling some of the 20-odd NZ beers that SANZA are able to supply Londoners. Last year’s winning combination of beer and pizza (from Hell – see their discount vouceher later in this newsletter) went down a treat again.

Many thanks to the following organisations that donated raffle prizes:

- SANZA donated a wonderful hamper of kiwi goodies [www.sanza.co.uk](http://www.sanza.co.uk)
- Hell Pizza donated a meal for two at either of their stores – they have recently opened in Shepherds Bush after their success in Fulham. [www.hellpizza.co.uk](http://www.hellpizza.co.uk)

## Thursday 26 November 2009 *Winter Drinks and Christmas Fair*

Winter Drinks was held on Thursday 26 November at the NZ House Penthouse. We were extremely happy that the view from the Penthouse could be enjoyed as it was the one evening that week that it did not rain in London! The event is always popular as the last of the year and this year was no different with the event selling out and attended by a capacity crowd.

As usual, things were festive and lively with kiwi food and drink, notably our first event featuring delicious pies from "Brother Tom's". In addition, there was retail therapy galore with the Kiwifruits Shop offering a discount to NZ Society guests, ten christmas stalls featuring New Zealand products, ranging from Bullet Coffee, silk and other luxury items from Judeworks, jewellery and home items from Paua Angel, the Kiwi Diary and gifts from Lucky Devil, handmade jewellery from Kohatu & Petros, unique flax paper products from Leizy days, greenstone and other handcarved native stone jewellery from Koru Greenstone and of course music provided by Spacific. Details of the stallholders, and links to their websites, are on the link on the homepage of our website.

The highlight of the evening was the charity raffle which featured beautiful gifts from all of our stallholders and which raised over £500 for our charity account - we thank all stallholders for their generosity and our NZ Society guests for their support. We would also like to say a big thank you to SANZA for donating the goodies bags and the beautiful hamper spot prize and urge you all to support these kiwi businesses!



**Above:** Paua Angel stallholders, Katrina & Riki

**Below:** SANZA gift hamper spot door prize winner



A reminder that the New Zealand Society is run by volunteer members for other members and their friends. Would you like to join the NZ Society committee, or lend a hand at an event? Offers of help are gratefully received via [nzsociety@nzsociety.co.uk](mailto:nzsociety@nzsociety.co.uk) or by chatting to one of the committee at any of our events.

## Other NZ linked events, offers etc

---

New Zealand Winegrowers - supporters of the NZ Society, are pleased to announce our

### New Zealand Wine Fair Tuesday 12 January 2010

**Time: 6.30pm-8.30pm**

**Place: Lord's Cricket Ground Nursery Pavilion, London, NW8 8QN**

Don't miss out, New Zealand wines are back in London this January!

What we've got in store for you -

- Kiwi winemakers to tell you everything you want to know about New Zealand wine
- Matthew Jukes MW will be announcing his Top 60 New Zealand Wines on the night
- Prizes galore
- A showcase of New Zealand food, travel and lifestyle products
- Delicious Kiwi pies and lots more besides!

Tickets are priced at £25, however NZ Winegrowers are offering NZ Society members an exclusive discount of £5 per ticket. To buy tickets at £25 please go to: [www.newzealandwineevents.co.uk](http://www.newzealandwineevents.co.uk)

To buy discounted tickets at £20 (mention NZ Society), contact Sarah Land - [sarahl@nzwine.com](mailto:sarahl@nzwine.com) or call 0207 973 8079.

New Zealand Society president Romy Brandeis attended the 2009 event and was in awe at the range of over 800 wines and the easy to browse geographical layout.

---



## THE SOUTHERNER, LONDON

Come on down and have a Speight's in the best Kiwi pub around - "The Southerner". We have Steinlager Pure in the fridges and real Kiwi steak and cheese pies in the warmer. See you there, good on you mate!

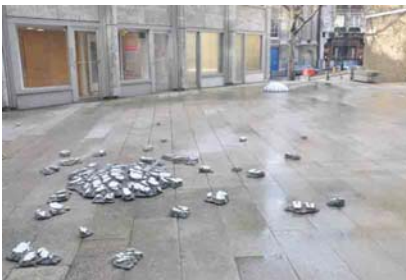
We would like to let you know that we are taking a break from 4pm on Christmas Eve through to Monday January 4, so we look forward to seeing you again in the New Year.

**210 The Strand (but really just around the corner on Essex St), Temple, London, WC2R 1AP, (0207)9362536**

---

## NZ Artist David Rickard's Test Flights @ Economist Plaza

A commission from the [Contemporary Arts Society](#) and the [European Ceramics Workcentre](#) led artist [David Rickard](#) to drop 1200 kilos of clay from the sky. The outcome is *Test Flights*, an installation comprising three 400 kg sculptures that appear to have been dropped from the Economist Plaza towers from different heights, and now resemble exploding macaroons on the ground. So what provoked this free fall? We spoke to David after last week's unveiling.



"Each tower in the plaza is a different height - 4, 8 and 16 stories. When people are in the space they tend to only look up maybe 1 or 2 stories so I wanted to draw attention to the difference in scale between the towers. After looking at materials I was surprised that clay, such a traditional material, did everything I needed it to, especially as I started by looking at thermoplastics. The constancy of gravity made me want to present and reveal it in simple way."

It's an impactful piece. Just don't try to make one at home.

*Test Flights at the The Economist Plaza, 25 St James's Street London SW1A 1HG*

until 12 March 2010.

By Rachel Borchard. Images by Manolo Verga



New Zealand Society Special Offer  
from Hell Pizza

Happy New Year - The treat is on us!  
Buy any double size pizza and we will give  
you a free dessert pizza!

Available at our Fulham or Shepherd's Bush  
Store until 31<sup>st</sup> January

08456 666 999

[hellpizza.co.uk](http://hellpizza.co.uk)

Offer only available by showing this voucher, only 1 per customer.



**CHRISTMAS & NEW YEARS HOLIDAYS**



Hit the Italian Alps with us for our new Christmas Snow Tour; SNOWMAD. Choose from 5 or 7 nights, Half Board or Self Catering in our exclusive resort only 1.5 hours from Venice. All arrival and departure transfers are included as well as your 5 or 7 day lift pass, 5 or 7 nights accommodation and on the half board option all your breakfasts and 4 course evening meals are included. Don't forget our evening group parties with our London DJ's, Quiz nights, Ice-skating parties and night skiing!!

Our other Christmas and New Year options are Egypt, Morocco, Russia, Prague, Berlin and Hogmanay - the famous street party in Edinburgh.

Check our website for full itineraries, prices, dates and inclusions  
[www.firstfestivaltravel.com](http://www.firstfestivaltravel.com) or call us on 0208 896 6070

## Air New Zealand New Zealander of the Year 2010 Award Nomination Form

The New Zealand Society would like to hear about people who have enhanced the reputation of New Zealand in Britain by presenting an outstanding positive image, whether it is through their contribution to public life or achievement in the arts, sport or academia. Previous winners include Esther Jessop, Ian Conrich, Tom and Susan Glynn, Peter Leslie, Dame Judith Mayhew Jonas, The Rt. Hon. Don McKinnon, Michael Campbell, the late Harry Mahon, Mark Todd and Peter Gordon. The winner will be announced at the Air New Zealand NZer of the Year awards night in the Penthouse of New Zealand House on Wednesday 24 March 2010.

**Your nomination could win you 2 tickets to the award evening, worth £60**

- 1 Nominees must be a New Zealander or British, who has resided in the UK for three years or longer.
- 2 Previous finalists will only be reconsidered within 5 years if the judges feel their contribution over the past year is clearly outstanding.
- 3 Previous winners are not eligible.

*I nominate* \_\_\_\_\_

*Because* \_\_\_\_\_

[please attach a biography/summary of the nominee's achievements and contact details\*]

**Your Name \*\*** \_\_\_\_\_

Your Telephone Number \_\_\_\_\_

Your Email Address \*\*\* \_\_\_\_\_

Please submit your nomination no later than **midday, Friday, 19<sup>th</sup> February 2010**

Post to The NZ Society Ltd, Box 277, 77 Beak Street, London W1F 9DB or Email to [nzsociety@nzsociety.co.uk](mailto:nzsociety@nzsociety.co.uk)  
**The Judges decision is final and no correspondence will be entered into.**

The Air New Zealand New Zealander of the Year award is proudly sponsored by Air New Zealand

\* I understand personal data supplied to us for the purposes of this award will be processed by the New Zealand Society and made available to the media and to Air New Zealand only for the purpose of promoting and administering the award.

\*\*Please enter me into the prize draw to win 2 tickets to the award ceremony. Please tick here. (terms and conditions available at [www.nzsociety.co.uk](http://www.nzsociety.co.uk))

\*\*\* The New Zealand Society is a voluntary, non-profit organisation, which organises events to promote relations between New Zealand and the United Kingdom. Your e-mail address and any personal data are used for these purposes by the New Zealand Society and similar organisations Occasionally we may send to you information about products and services with a New Zealand connection. Please tick here if you would like to be deleted from our mailing list.

## Air New Zealand New Zealander of the Year 2010 Award

### Prize Draw terms and conditions:

- (a) Entrants must be UK resident and aged 18 or over - please note that non-UK residents may not enter. Employees of Air New Zealand, Committee members and staff of New Zealand Society Limited (NZ Society), their families or anyone associated with this promotion may not enter.
- (b) Entries not submitted in accordance with these rules, delayed, damaged, incomplete, altered or illegible will be disqualified. No responsibility is accepted for entries lost or delayed.
- (c) One entry per nomination.
- (d) The prize for the nominations draw consists of 2 tickets to the award reception. The prize is not transferable and no cash alternative is available. No changes or amendments to the promotion are permitted. The judge's decision is final and no correspondence will be entered into.
- (e) The prize will be drawn during the judging process in late February and the winner will be notified within 14 days of draw.
- (f) The winner will receive notification via email. Information about the winner will be available by sending an SAE to NZ Society Ltd, Box 277, 77 Beak Street, London W1F 9DB
- (g) The winners agree to take part in publicity in connection with this promotion.
- (h) If a prize is unclaimed after reasonable efforts have been made to contact the winner the promoter will be entitled to redraw the prize.
- (i) The promoter reserves the right to alter, amend or foreclose the promotion without prior notice.
- (j) The promoter is NZ Society Ltd, Box 277, 77 Beak Street, London W1F 9DB

## Membership fees

Single: £25.00                      Couple: £37.50  
Single over 65 £15.00              Couple over 65: £22.50  
Corporate x 3: £75.00              Corporate x 10 £125



## Application for Individual/Corporate Membership (please delete as appropriate)

### MEMBERSHIP YEAR RUNS FROM 1 OCTOBER – 30 SEPTEMBER

Name: \_\_\_\_\_ Spouse or Partner's Name: \_\_\_\_\_  
(If joining as couple)

Address: \_\_\_\_\_ Post Code: \_\_\_\_\_

Occupation: \_\_\_\_\_ Date of Birth: \_\_\_\_\_

Employer/Company Name: \_\_\_\_\_

Membership Type:              Individual                      Couple  
   Individual 65+                      Couple 65+  
   Corporate 3                      Corporate 10

**Interests:** (please indicate which of the following would interest you the most in order of 1 (the most) to 5 (the least))

- Social Events (wine tasting, food)
- Visit Events (gardens, houses)
- Cultural Events (exhibitions, performance)
- Sporting Events
- Other (please specify)

Connections to New Zealand (if any)

Telephone/Mobile: \_\_\_\_\_ (Home:) \_\_\_\_\_ (Work:) \_\_\_\_\_

Email 1 \_\_\_\_\_ Email 2 \_\_\_\_\_

### Corporate Membership – names of nominees:

Signature: \_\_\_\_\_ Signature of spouse/partner: \_\_\_\_\_

(date:) \_\_\_\_\_ (date:) \_\_\_\_\_

Cheques and form should be posted to: Karyn Newman, Secretary, NZ Society, Box 277, 77 Beak Street, London W1F 9DB. Cheques should be made out to: THE NEW ZEALAND SOCIETY LTD.

Forms may also be emailed to: [membership@nzsociety.co.uk](mailto:membership@nzsociety.co.uk) quoting your cheque number for our records so we know to expect your cheque in the mail, or advise us if you prefer to pay via paypal (for full annual membership payments only) and we will email you an invoice to allow payment via paypal.

### Ki te taumata, Aotearoa ki Ingarangi

Your personal data will be used by the New Zealand Society and similar organisations to promote & organise events related to New Zealand. Occasionally we may send you information about third-party products & services with a New Zealand connection. For any changes to your details, please contact Karyn Newman e-mail: [nzsociety@nzsociety.co.uk](mailto:nzsociety@nzsociety.co.uk) tel: 07957 424 004.

## Contacts

NZ Society Ltd  
Box 277  
77 Beak Street  
London W1F 9DB  
tel 07957 424 004 (voicemail)

[www.nzsociety.co.uk](http://www.nzsociety.co.uk)  
[nzsociety@nzsociety.co.uk](mailto:nzsociety@nzsociety.co.uk)

## Key Committee contacts

*Romy Brandeis - President, Webmistress*  
8 St Martin's Close  
London NW1 0HR  
Mobile 07790 771 503  
Email: [president@nzsociety.co.uk](mailto:president@nzsociety.co.uk) ,  
[webmistress@nzsociety.co.uk](mailto:webmistress@nzsociety.co.uk) (website content)

*Helen Campbell - Past President, Media*  
Email: [h.m.campbell@ntlworld.com](mailto:h.m.campbell@ntlworld.com)

*Karyn Newman, Hon Secretary*  
NZ Society Ltd  
Box 277 77 Beak Street  
London W1F 9DB  
Email: [nzsociety@nzsociety.co.uk](mailto:nzsociety@nzsociety.co.uk)  
Tel 07958 601 397

*Diane Beecham, Treasurer*  
Email: [Diane.Beecham@veolia.co.uk](mailto:Diane.Beecham@veolia.co.uk)

NZ Society Scotland - [www.nzsscotland.org.uk](http://www.nzsscotland.org.uk)

## Membership fees

Membership runs from date joined to 30 September 2009. Download membership form at  
<http://www.nzsociety.co.uk/UKMEMBERSHIP.pdf>

Full Year Fees from 1 October - 30 September  
Single: £25.00, Couple: £37.50  
Single over 65: £15.00 Couple over 65: £22.50  
Corporate x 3: £75.00 Corporate x 10 £125

Member Benefits include:  
Regular newsletters and emailing of events of interest  
Discounts at NZ Society events  
Preferential booking to NZ Society Events

*Until the next newsletter - Ka kite!*